



The right connection  
The right environment

## Ball Valves BV - G

Ref. No. H14649  
Release: Apr 2025

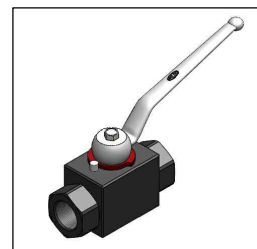
ENGINEERING - 1 of 2

### Description

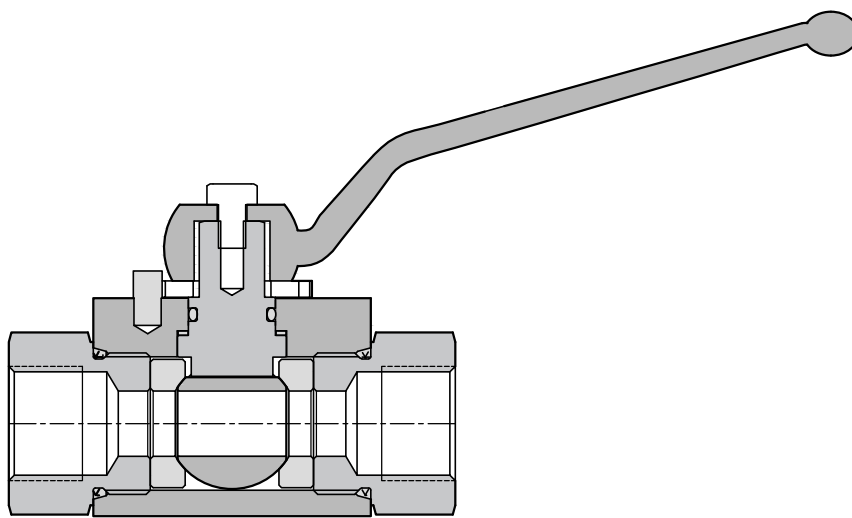
These are bi-directional, In-line valves, which are mostly used in all hydraulic application.

Ball valves, Series BV are having BSPP ports at inlet as well as outlet.

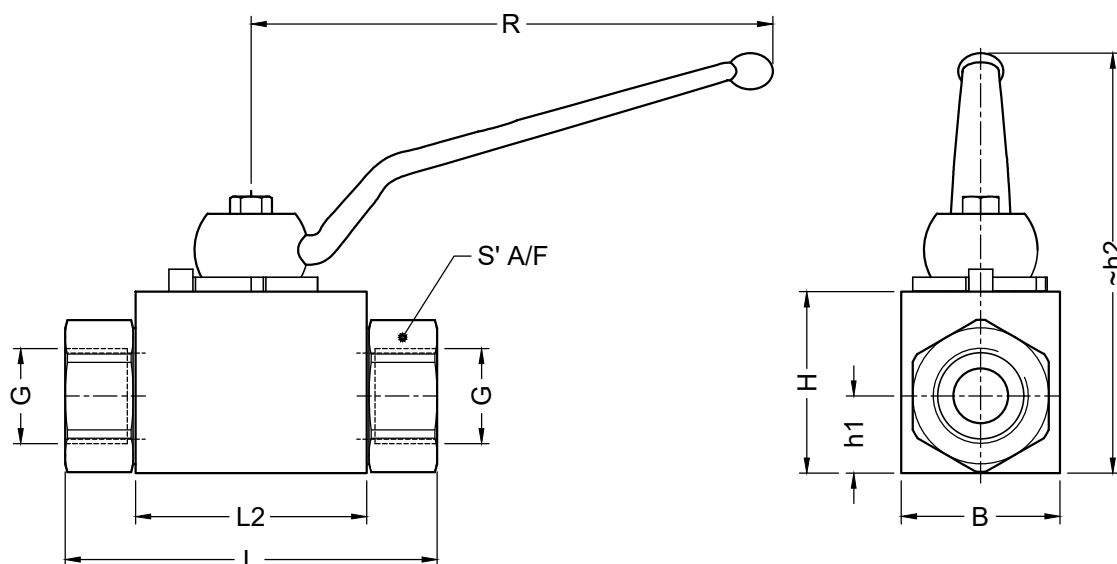
The Sizes are ranging from G 1/8 to G 1



### Section



### Unit Dimensions



Dimensions in mm.



Table 1

Part code	G	Pr. (bar)	h1	h2	B	H	R	S	L2	L
<b>BVG01-2.0</b>	G 1/8	500	10	55	20	25	76	19	36	69
<b>BVG02-2.0</b>	G 1/4	500	10	55	20	25	76	19	36	69
<b>BVG03-2.0</b>	G 3/8	500	14.5	68	30	35	100	24	45	73
<b>BVG04-2.0</b>	G 1/2	500	17	92	35	40	125	30	51	82
<b>BVG06-2.0</b>	G 3/4	315	24	106	45	55	187	41	60	93
<b>BVG08-2.0</b>	G 1	315	26	118	55	60	187	50	70	115



The right connection  
The right environment

## Ball Valves BV - G

Ref. No. H14649  
Release: Apr 2025

ENGINEERING - 2 of 2

### Technical Specifications

Construction-----	Inline threaded body hand lever
Mounting style -----	Inline
Mounting position -----	Optional
Flow direction -----	Bi-directional
Operating pressure -----	Refer Table 1
Hydraulic medium -----	Mineral oil.
Viscosity range -----	10 cSt to 380 cSt.
Fluid cleanliness requirement-----	As per ISO 4406 20/18/15
Fluid temperature range -----	-20 °C to +70 °C

### Ordering Code

