



The right connection
The right environment

Pressure Gauge Mounting Block GMB

Ref. No. H14287
Release: Apr 2025

ENGINEERING - 1 of 2

Description

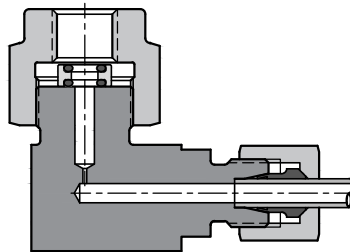
Gauge mounting blocks GMB are meant for applications where a pressure gauge is permanently connected to a pressure line (no isolator valve in between) and needs to be mounted on a hydraulic manifold or a control panel.

The mounting blocks offer following advantages,

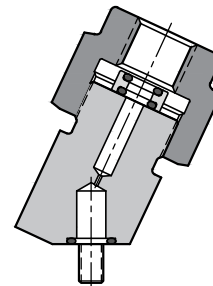
- Simple machining of the interface /panel
- Quick assembly,
- Ease of axial orientation of the Pressure gauge face for proper alignment.
- Compact and elegant assembly,
- Easy readability of the gauge.



Section



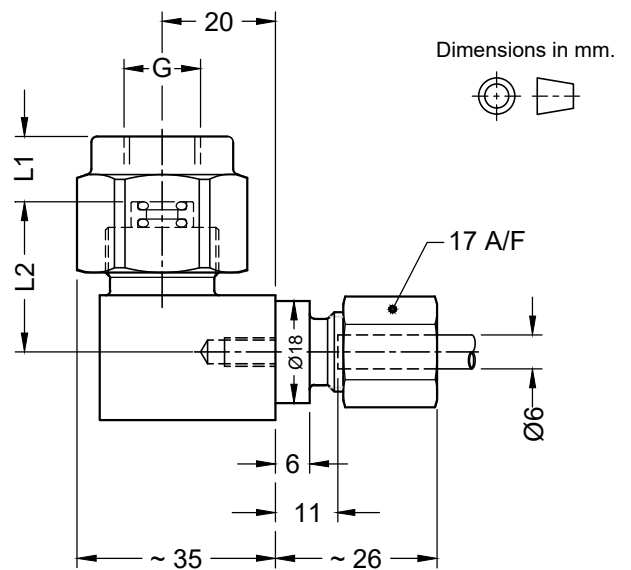
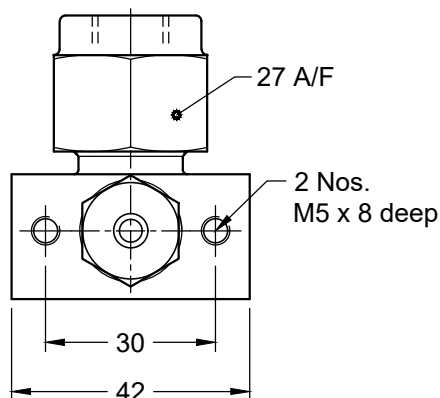
Panel Mounting, Model: GMB-P



Panel Mounting, Model: GMB-M

Unit Dimensions

Gauge mounting Block, Panel Mounting
Model: GMB-P



G	G 1/4	G 3/8	G 1/2
L1	11.5	11.5	12.5
L2	27.5	28.5	28.5



The right connection
The right environment

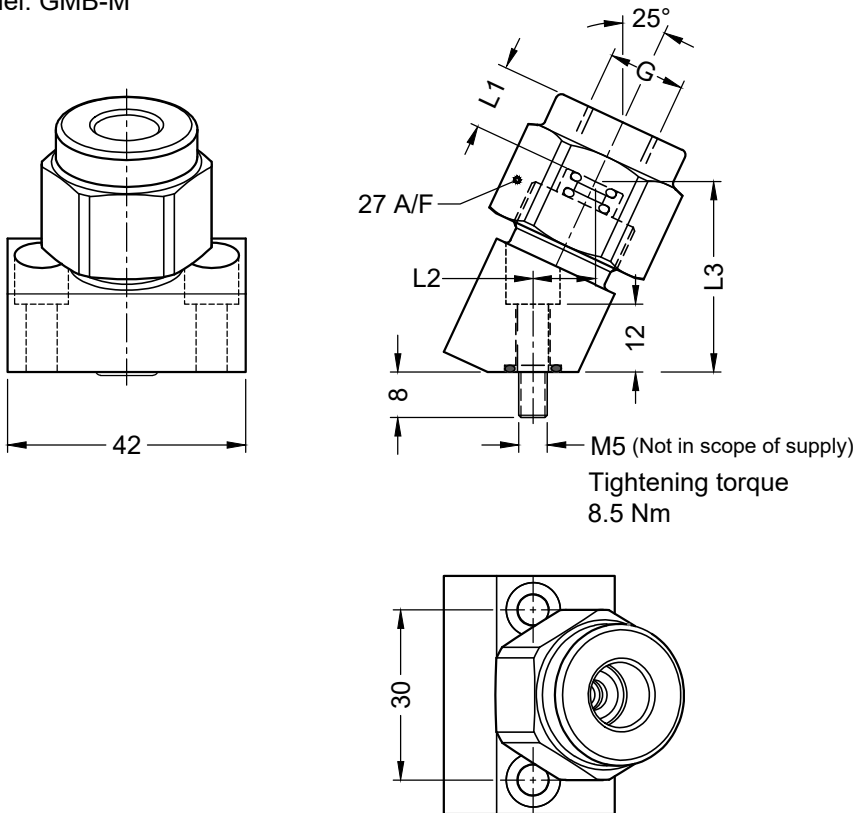
Pressure Gauge Mounting Block GMB

Ref. No. H14287
Release: Apr 2025

ENGINEERING - 2 of 2

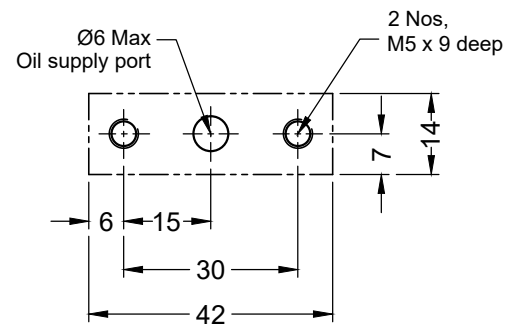
Unit Dimensions

Gauge mounting Block, Subplate Mounting
Model: GMB-M



G	G 1/4	G 3/8	G 1/2
L1	11.5	11.5	12.5
L2	11.0	11.5	11.5
L3	33.5	33.5	34.5

Mounting Interface



Technical Specifications

Mounting ----- Sub-plate mounted or Panel mounted
Interface standard ----- Factory standard.
Mounting position ----- Optional
Operating pressure ----- 350 bar.
Hydraulic medium ----- Mineral oil.
Fluid temperature range ----- -20 °C to +70 °C.

Ordering Code

GMB	M	G02	2.0
Gauge Mounting Block		Design Series Subject to revision	
Sub plate mounting	M		
Panel mounting	P		
Gauge Port		Seals	
G 1/4	G02	Omit	Nitrile
G 3/8	G03	V	FKM (Viton)
G 1/2	G04		

All rights reserved.
Subject to change without notice.
Due to continuous improvement in the design of the product, the actual product supplied may look different than shown above.