



The right connection
The right environment

Pressure Gauge Isolator Valve 1GI06PS **

Ref. No. H05427
Release: Apr 2025

ENGINEERING - 1 of 2

Description

Seat type valve for isolating the pressure in the hydraulic systems.

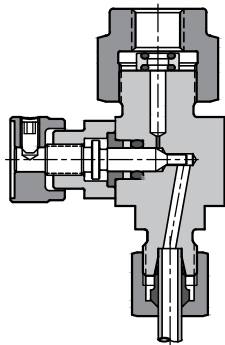
Leakage free construction.

No return line needed.

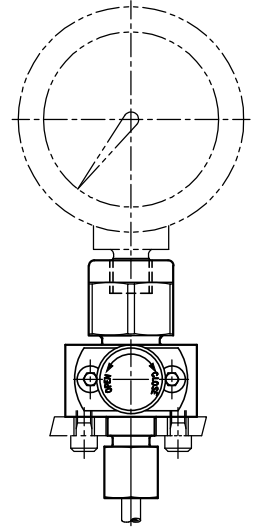
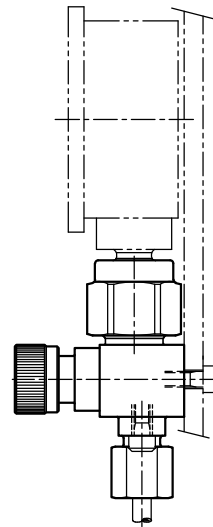
Compact assembly.

Valve can be mounted on vertical as well as on the horizontal panel face.

Section

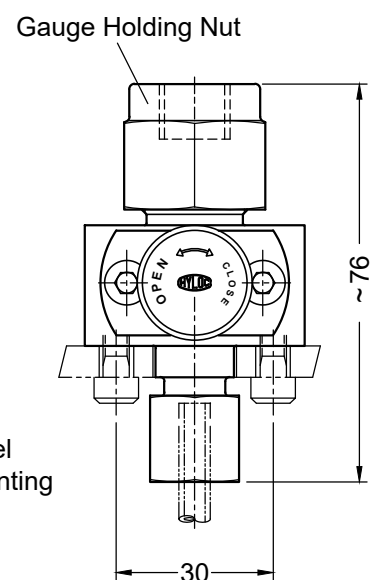
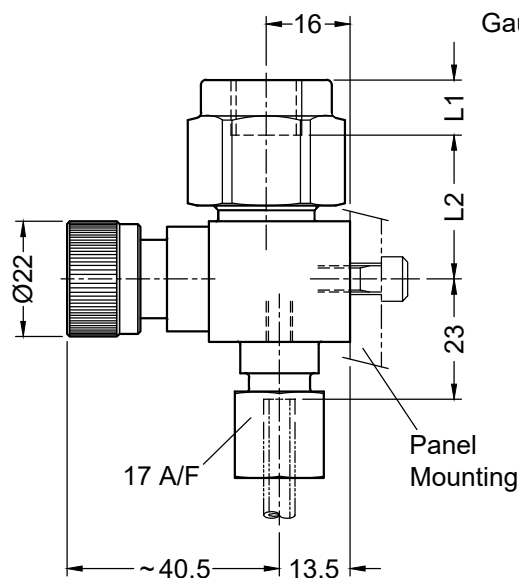
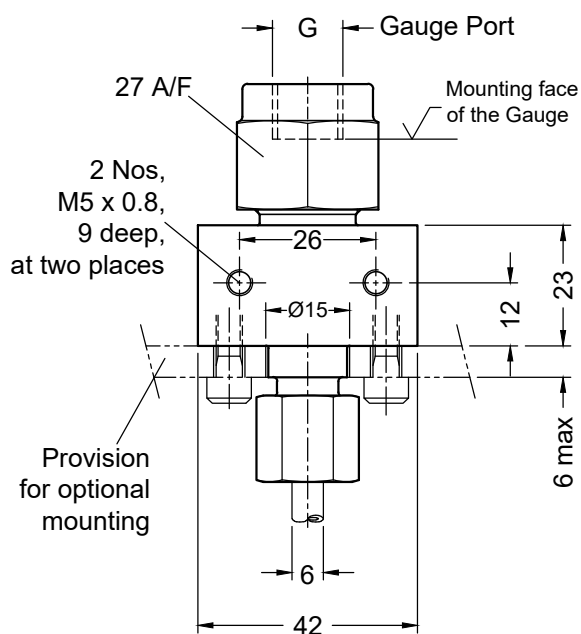


Hydraulic Symbol



Unit Dimensions

Dimensions in mm.



G	G 1/4	G 3/8	G 1/2
L1	10.5	10.0	12.0
L2	27.5	28.5	28.5



The right connection
The right environment

Pressure Gauge Isolator Valve

1GI06PS **

Ref. No. H05427
Release: Apr 2025

ENGINEERING - 2 of 2

Technical Specifications

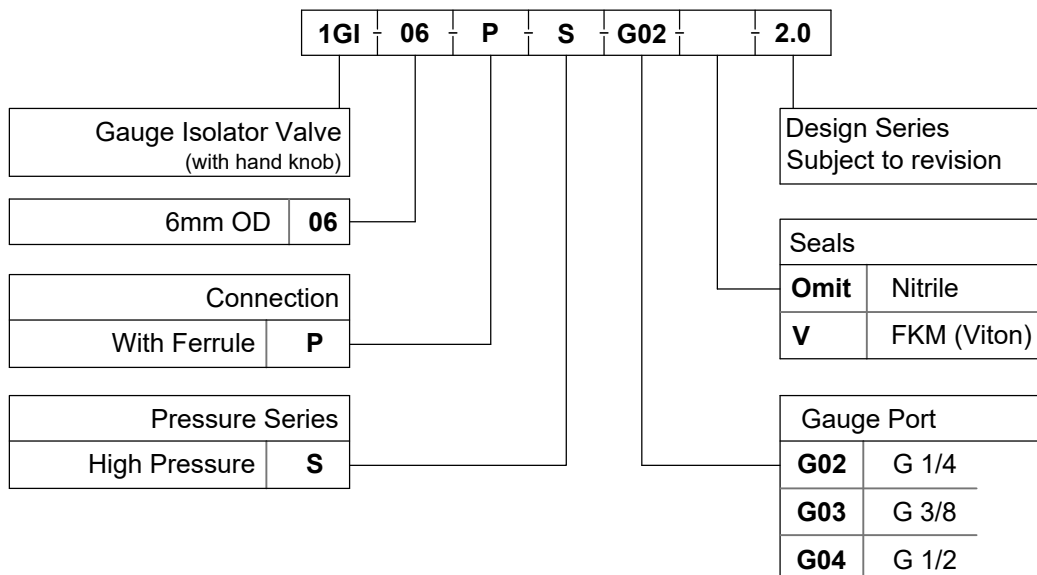
Construction	Seat type
Mounting	Panel mounting
Mounting position	Optional
Operating pressure	350 bar.
Hydraulic medium	Mineral oil.
Viscosity range	10 cSt to 380 cSt
Fluid temperature range	-20 °C to +70 °C.
Fluid cleanliness requirement	As per ISO 4406 20/18/15

Instructions for Pressure Gauge assembly

How to orient and tighten the gauge face to the desired position?

- Screw in the *Gauge holding Nut* onto the valve till its bottom face of it touches the face of the valve body.
- Insert the sealing ring provided with the valve, from the top of the nut.
- Screw in the gauge into the *Gauge Holding Nut* till its sealing face touches the sealing ring.
- Loosen the gauge (if required) by rotating it in anti-clockwise direction till the face of the gauge points towards desired position.
- Mount the Gauge Isolating Valve on to the sub-plate or panel.
- Rotate the Gauge Holding Nut by means of a spanner in anti-clockwise direction to tighten the gauge onto the sealing ring.
- While rotating the nut, hold the gauge to its proper orientation.

Ordering Code



Note : Add prefix 316 to the existing part code for SS 316 valves.
e.g. **316-1GI06PSG02-2.0**

All rights reserved.

Subject to change without notice.

Due to continuous improvement in the design of the product, the actual product supplied may look different than shown above.