



The right connection
The right environment

Shut off Valves, Sub-plate mounting MHSL

Ref. No. H04087
Release: Apr 2025

ENGINEERING - 1 of 2

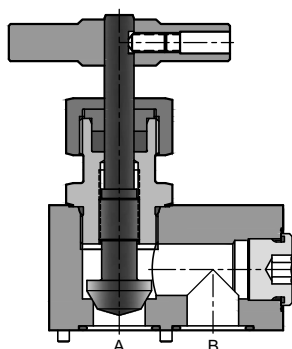
Description

Shut off valves model **MHSL** are rising spindle valves with metal seat for leak free closure between its port 'A' and Port 'B'

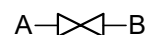
The mounting interface conforms to factory standard.



Section



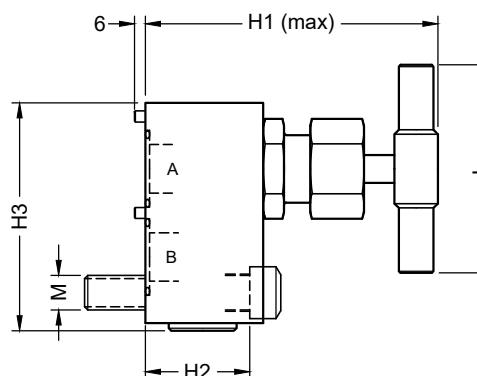
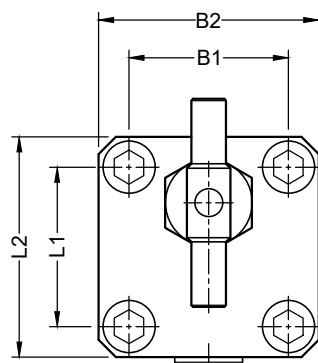
Hydraulic Symbol



Unit Dimensions

Sub-plate mounting

Dimensions in mm.



Size	Part code	B1	B2	L1	L2	H1	H2	H3	L	Mounting screws (10.9)	Torque	Mass (Kg)
DN 11	MHSL11-2.0	47.8	65	60.5	78	106	35.0	79	64	M10 x 50 Long	20 Nm	1.5
DN 19	MHSL19-2.0	65.0	97	81.0	113	135	26.0	118	84	M16 x 50 Long	110 Nm	3.6
DN 28	MHSL28-2.0	92.0	127	92.0	127	186	60.0	131	120	M20 x 90 Long	225 Nm	8.5

Technical Specifications

Construction ----- Rising spindle.
Mounting style ----- Sub-plate mounting.
Mounting Interface ----- Factory standard.
Flow direction ----- From 'A' to 'B' or 'B' to 'A'
Operating pressure ----- 350 bar.

Hydraulic medium ----- Mineral oil.
Viscosity range ----- 10 cSt to 380 cSt.
Fluid temperature range ----- -20 °C to +70 °C
Fluid cleanliness requirement ----- As per ISO 4406 20/18/15
Nom. flow handling capacity ----- Refer graphs



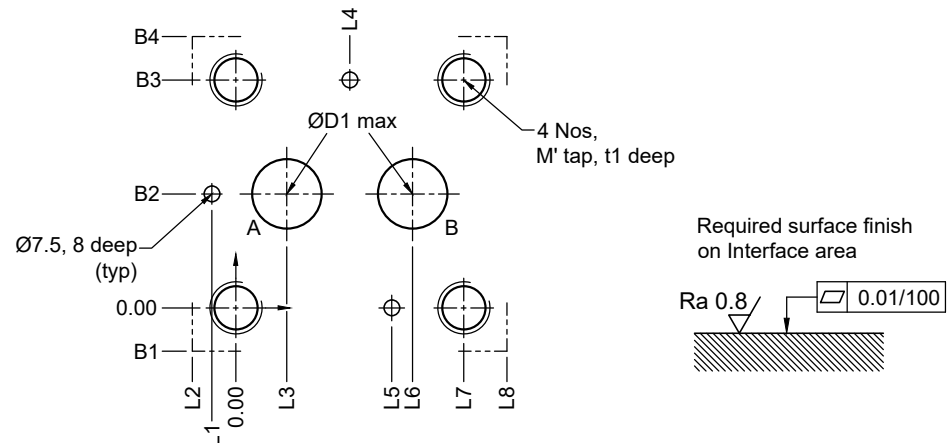
The right connection
The right environment

Shut off Valves, Sub-plate mounting MHSL

Ref. No. H04087
Release: Apr 2025

ENGINEERING - 2 of 2

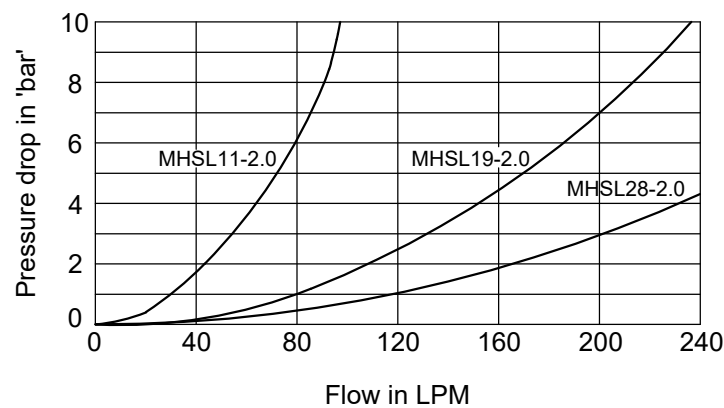
Interface - Factory standard



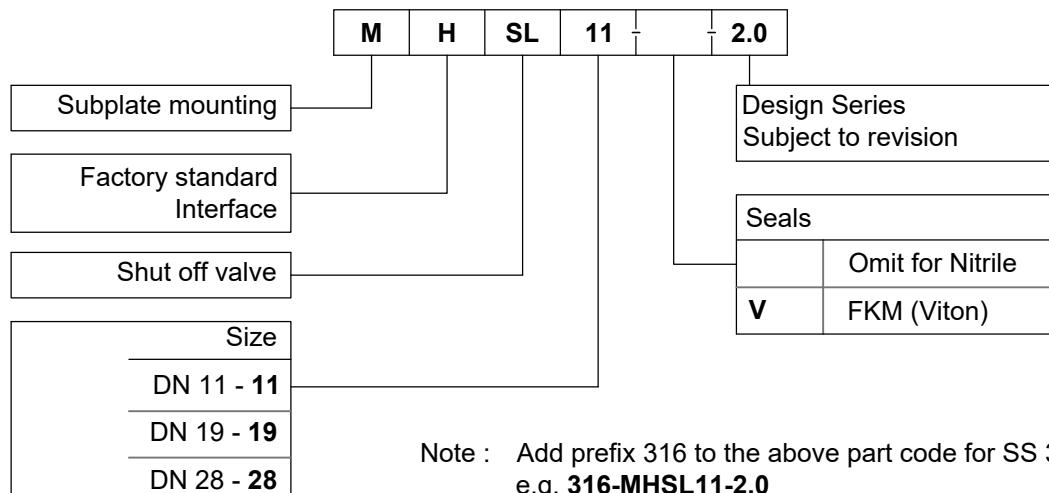
Size	Part code	ØD1	L1	L2	L3	L4	L5	L6	L7	L8	B1	B2	B3	B4	M	t 1
DN 11	MHSL11-2.0	11.0	---	-8.6	12.7	30.3	47.8	47.8	60.5	69.4	-8.6	23.9	47.8	56.4	M10	18
DN 19	MHSL19-2.0	19.0	-8.70	-16.0	22.2	40.5	---	68.3	81.0	97.0	-16.0	32.5	65.0	81.0	M16	28
DN 28	MHSL28-2.0	28.0	-9.65	-17.5	20.6	46.0	---	71.4	92.0	109.5	-17.5	46.0	92.0	109.5	M20	35

Performance curves

Oil used : ISO VG 68
Viscosity : 68 cSt @ 40 °C
Test conducted at : 50 °C
Condition : Valve fully opened



Ordering Code



All rights reserved.
Subject to change without notice.
Due to continuous improvement in the design of the product, the actual product supplied may look different than shown above.