



The right connection
The right environment

Shut off Valves (Screw In Cartridge), Sub-plate mounting **MHSLB25**

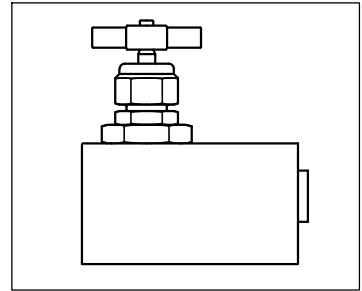
Ref. No. H03656
Release: Apr 2025

ENGINEERING - 1 of 2

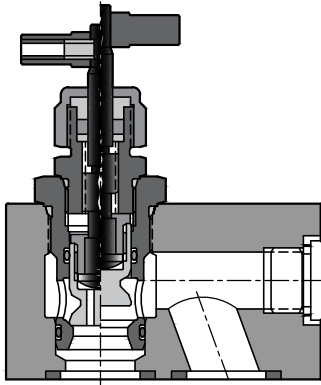
Description

Shut off valves model **MHSLB25** are seat type valves with
replacable cartridge.
Balanced sealed poppet construction to reduce operating forces.

The mounting interface conforms to factory standard.



Section



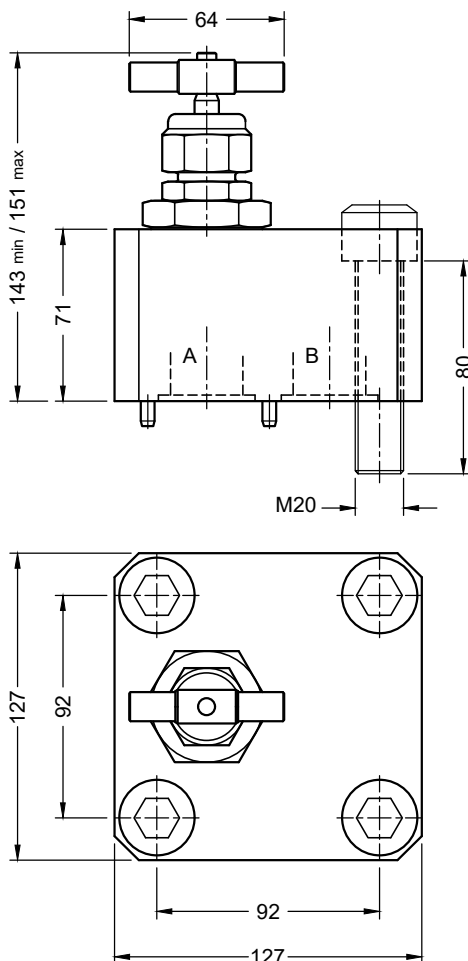
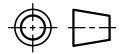
Hydraulic Symbol



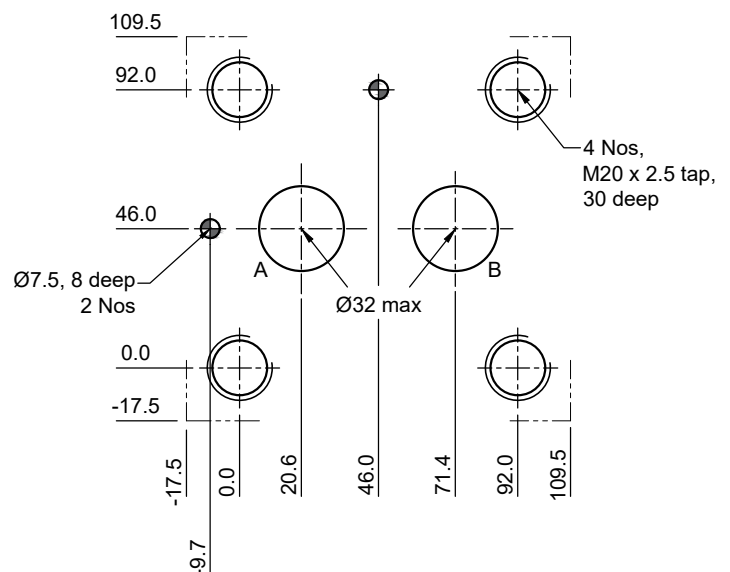
Unit Dimensions

Sub-plate mounting

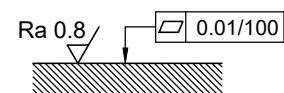
Dimensions in mm.



Interface - Factory standard



Required surface finish
on Interface area



Valve mounting Screws : M20 x 2.5 x 80 Long (10.9) - 4 Nos
Tightening torque : 312 Nm



The right connection
The right environment

Shut off Valves (Screw In Cartridge), Sub-plate mounting **MHSLB25**

Ref. No. H03656
Release: Apr 2025

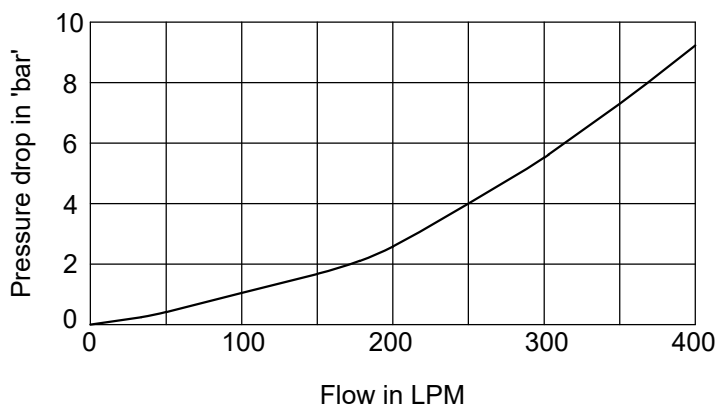
ENGINEERING - 2 of 2

Technical Specifications

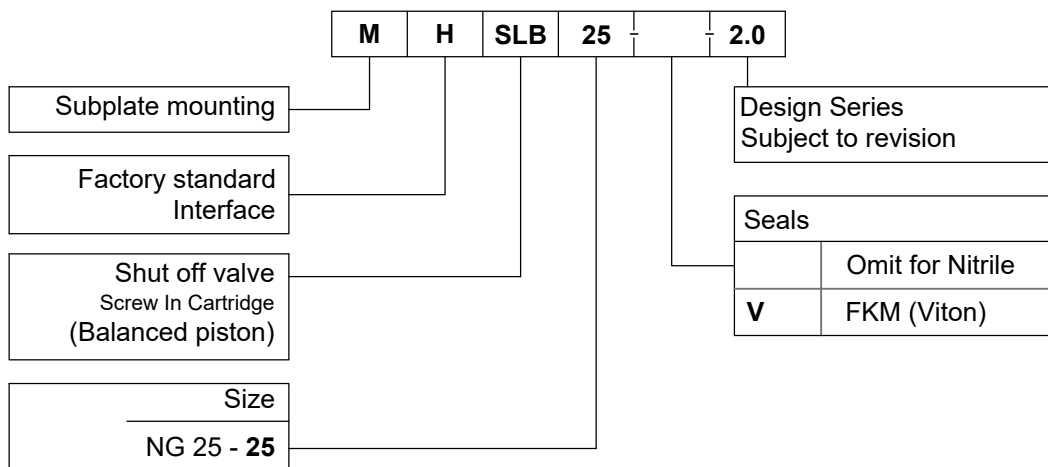
Construction	Seat type Screw in cartridge
Mounting style	Sub-plate mounting
Mounting Interface	Factory standard
Flow direction	From 'A' to 'B'
Operating pressure	350 bar.
Hydraulic medium	Mineral oil.
Viscosity range	10 cSt to 380 cSt
Fluid temperature range	-20 °C to +80 °C
Fluid cleanliness requirement	As per ISO 4406 20/18/15
Nom. flow handling capacity	Refer graphs

Performance curves

Oil used : ISO VG 68
Viscosity : 68 cSt @ 40 °C
Test conducted at : 50 °C
Condition : Valve fully opened



Ordering Code



Note : Add prefix 316 to the above part code for SS 316 Valves.
e.g. **316-MHSLB25-2.0**

All rights reserved.
Subject to change without notice.
Due to continuous improvement in the design of the product, the actual product supplied may look different than shown above.