



The right connection
The right environment

Pressure Gauge Isolator Valve (PUSH TO READ) GI

Ref. No. H03542
Release: Apr 2025

ENGINEERING - 1 of 3

Description

The Pressure gauge Isolator valve, model **GI** is meant for checking the system pressure to which it is connected, whenever required.

The valve is a spool type, spring off-set, manually operated device.

In normal condition, the valve blocks the pressure port and keeps the pressure gauge connected to the drain. Thus isolating the gauge from system pressure surges and eliminating continuous pressure strain on the gauge.

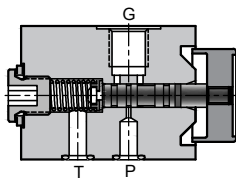
By pushing the actuator knob of the valve, system pressure can be read on the gauge.

The valve is available either for Sub-plate mounting on a sub-plate or back face mounting or with threaded ports.

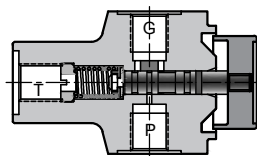
The pressure gauge can either be directly mounted on the valve or can be connected remotely.



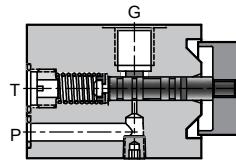
Section



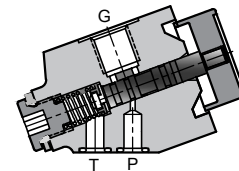
Sub-plate Mounting
Model: **GIM**



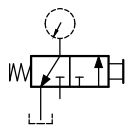
Panel mounting
Model: **GIP**



Back face Mounting
Model: **GIB**



Sub-plate Mounting
Model: **GIMH**



Hydraulic Symbol

Unit Dimensions

Gauge Isolator Valve, Sub-plate Mounting, Model: **GIM**

Dimensions in mm.

