



The right connection
The right environment

Quick Disconnect Coupling QDC

Ref. No. H03297
Release: Apr 2025

ENGINEERING - 1 of 2

Description

Quick disconnect couplings are designed for applications, where fast connection and disconnection of hydraulic lines is a need of the system.

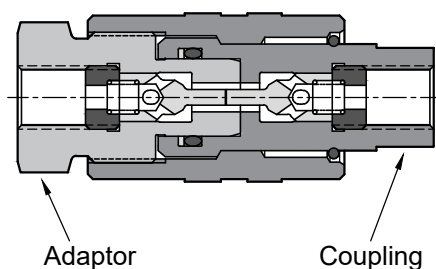
These couplings when connected offers unrestricted flow passage.

They are designed for reliable and safe operations by avoiding premature flow before the coupling is fully closed.

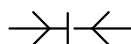


Section

(Self sealing Coupling, Self sealing adaptor illustrated)

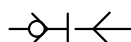


Hydraulic Symbol



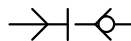
Through type Adaptor
Through type Coupling

AT
CT



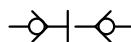
Self sealing Adaptor
Through type Coupling

AS
CT



Through type Adaptor
Self sealing Coupling

AT
CS



Self sealing Adaptor
Self sealing Coupling

AS
CS

Unit Dimensions

End connections (Female threading)
BSP - **G**
Metric - **M**

Dimensions in mm.

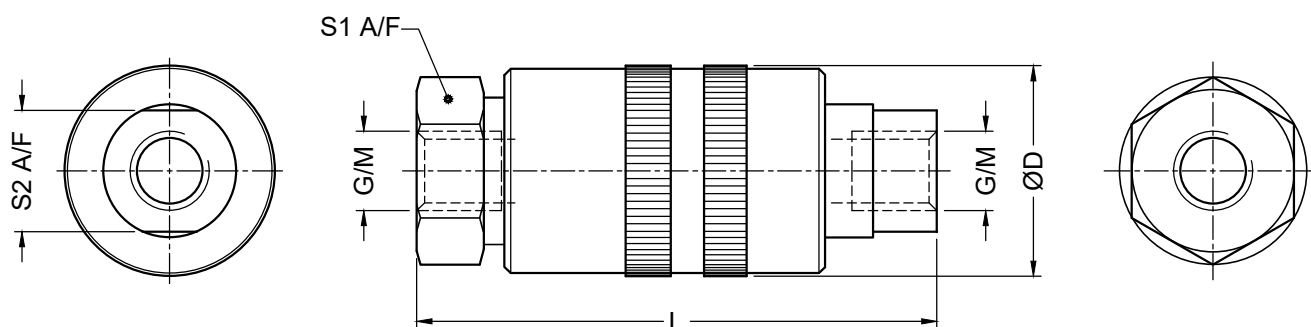


Table No. 1

Pressure (bar)	G	M	S1	S2	ØD	L	Mass (Kg)
800	G 1/4	M14x1.5	27	19	35	86	0.45
800	G 3/8	M18x1.5	32	22	37	88	0.53
600	G 1/2	M22x1.5	41	30	46	116	1.05
500	G 3/4	M26x1.5	50	36	56	130	1.80
400	G 1	M33x2.0	55	41	62	150	2.35



The right connection
The right environment

Quick Disconnect Coupling QDC

Ref. No. H03297
Release: Apr 2025

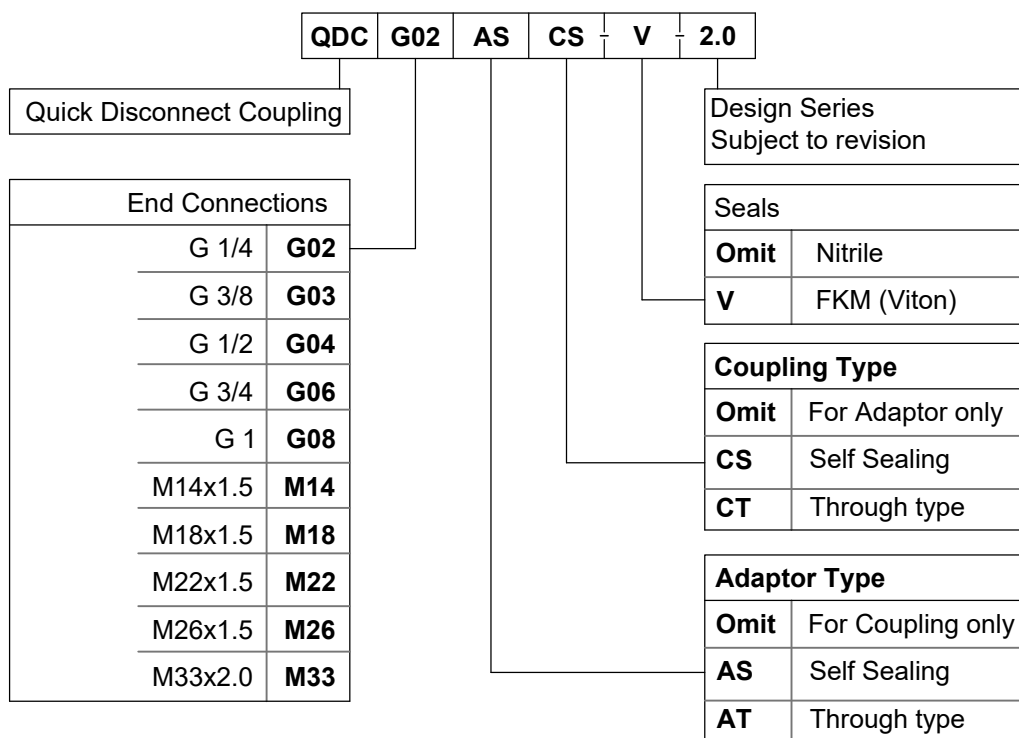
ENGINEERING - 2 of 2

Technical Specifications

Construction ----- Poppet type
Operating pressure ----- Refer Table No. 1
Hydraulic medium ----- Mineral oil.
Viscosity range ----- 10 cSt to 380 cSt
Fluid temperature range ----- -20 °C to +80 °C.
Fluid cleanliness requirement ----- As per ISO 4406 20/18/15

Caution : Pressure on the hydraulic lines must be released before they are connected / disconnected.

Ordering Code



Note : Add prefix 316 to the above part code for SS 316 Quick disconnect couplings.
e.g. **316-QDCG02ASCS-2.0**