



The right connection
The right environment

Needle Valve - Cartridge KHNL

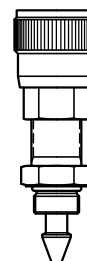
Ref. No. H03082
Release: Apr 2025

ENGINEERING - 1 of 2

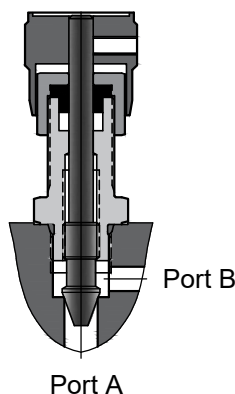
Description

Needle valve Cartridge **KHNL** are rising spindle, seat type valves with metal to metal seat for leak free closure between its port 'A' and Port 'B'

The mounting cavity conforms to Factory standard.



Section



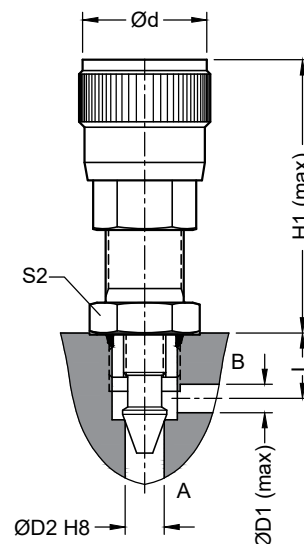
Hydraulic Symbol



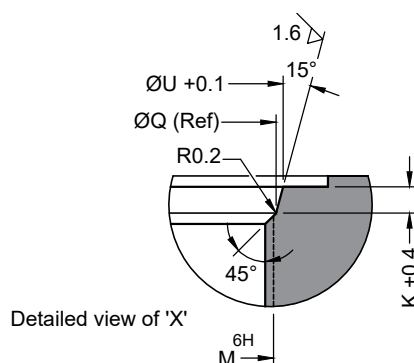
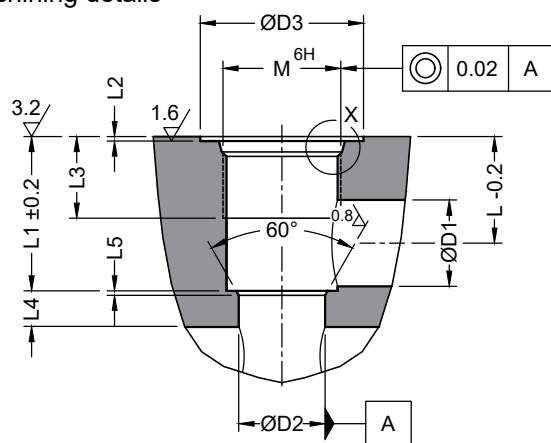
Unit Dimensions

Dimensions in mm

Part code	Size	L	H1	ØD1	ØD2	Ød	S2
KHNL08-2.0	08	18	85.5	11	8	37	27
KHNL11-2.0	11	18	85.5	11	11	37	27
KHNL14-2.0	14	23	87.0	19	14	48	32
KHNL19-2.0	19	23	87.0	19	19	48	32
KHNL28-2.0	28	33	108.5	28	28	68	50



Cavity Machining details



Dimensions in mm

Part code	ØD1	ØD2	ØD3	L	L1	ØU	ØQ	L2	L3	L4	L5	K	M
KHNL08-2.0	10	8	31.0	18	24	21.8	20.5	0.2	16	3	0.5	2.4	M20 x 1.5
KHNL11-2.0	10	11	31.0	18	24	21.8	20.5	0.2	16	3	0.5	2.4	M20 x 1.5
KHNL14-2.0	19	14	36.0	23	33	27.8	26.5	0.2	18	5	1.0	2.4	M26 x 1.5
KHNL19-2.0	19	19	36.0	23	33	27.8	26.5	0.2	18	5	1.0	2.4	M26 x 1.5
KHNL28-2.0	28	28	54.5	35	51	44.4	42.7	1.0	24	7	1.5	3.1	M42 x 2.0



The right connection
The right environment

Needle Valve - Cartridge KHNL

Ref. No. H03082
Release: Apr 2025

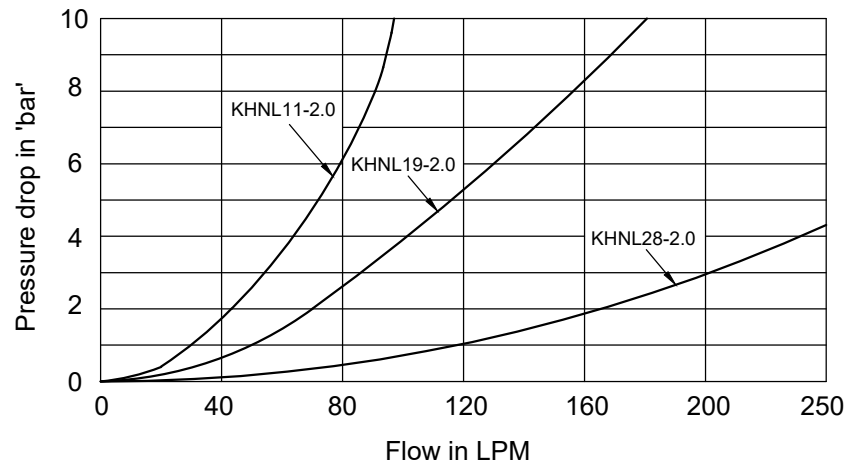
ENGINEERING - 2 of 2

Technical Specifications

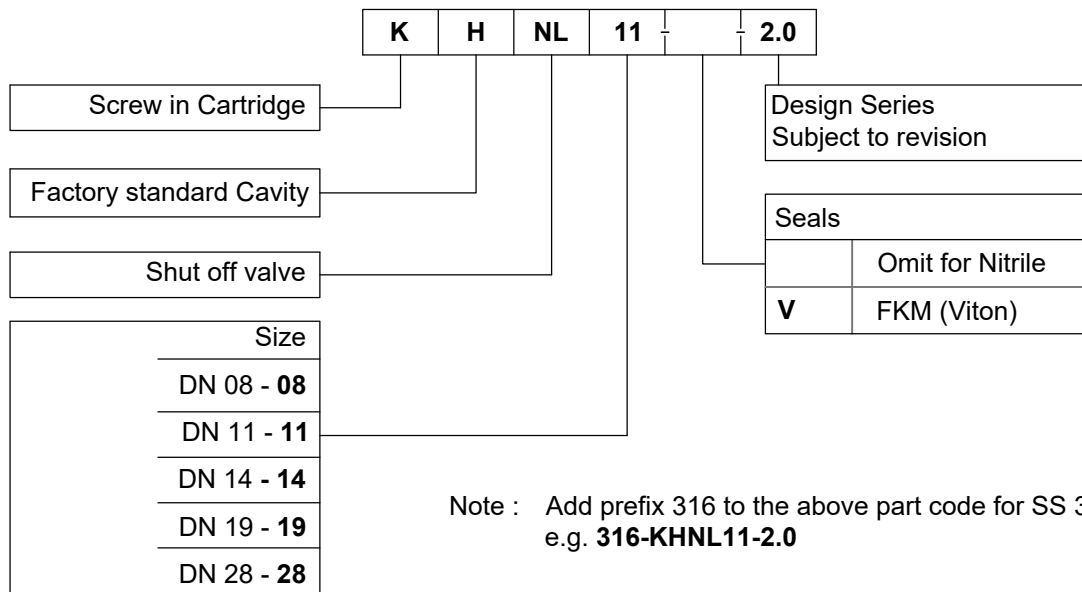
Construction	Seat type valve
Mounting type	Insert in cavity conforming to factory standard
Mounting position	Optional
Flow direction	From port 'A' to port 'B'
Operating pressure	350 bar.
Hydraulic medium	Mineral oil.
Viscosity range	10 cSt to 380 cSt.
Fluid temperature range	-20 °C to +70 °C
Fluid cleanliness requirement	As per ISO 4406 20/18/15
Nom. flow handling capacity	Refer graph

Performance curves

Oil used : ISO VG 68
Viscosity : 68 cSt @ 40 °C
Test conducted at : 50 °C
Condition : Valve fully opened



Ordering Code



Note : Add prefix 316 to the above part code for SS 316 Valves.
e.g. **316-KHNL11-2.0**

All rights reserved.
Subject to change without notice.
Due to continuous improvement in the design of the product, the actual product supplied may look different than shown above.