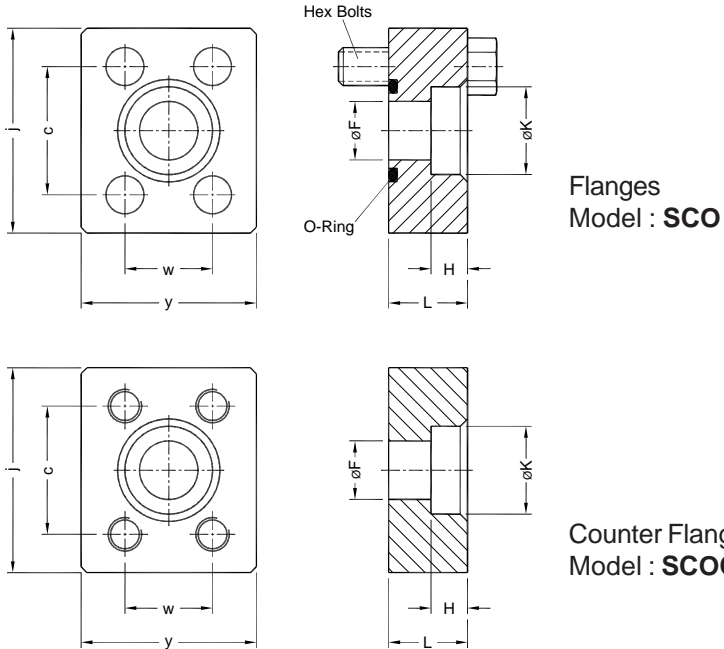


# Socket Weld Flanges

SCO / SCOC

Dimensions in mm

Mounting Interface conforms to ISO 6162



## Standard Pressure Series (Code 61)

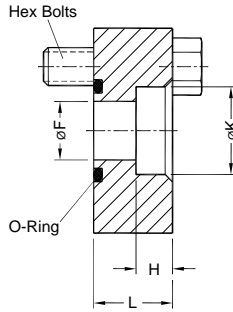
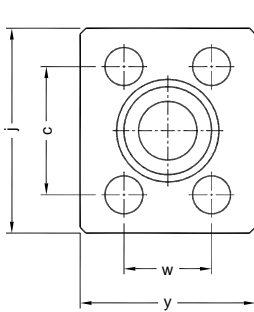
Part No. Flanges	Part No. Counter Flanges	Nom Flange Size	Pr (bar)	y	j	c	w	ØF	H	ØK	L	O' Ring (Viton) 90 ± 5 Shore	Hex. bolts (10.9)
SCO-21.3	SCOC-21.3	1/2"	350	46	54	38.1	17.5	13	10	21.8	18	19.0 x 3.55	M8 x 30
SCO-26.6	SCOC-26.6	3/4"	350	52	65	47.6	22.3	19	13	27.0	25	25.0 x 3.55	M10 x 40
SCO-33.4	SCOC-33.4	1"	350	59	70	52.4	26.2	25	13	33.7	25	32.5 x 3.55	M10 x 40
SCO-42.2	SCOC-42.2	1.1/4"	250	73	79	58.7	30.2	32	13	42.6	25	37.5 x 3.55	M10 x 40
SCO-48.3	SCOC-48.3	1.1/2"	200	83	94	69.9	35.7	38	13	48.7	32	47.5 x 3.55	M12 x 50
SCO-60.3	SCOC-60.3	2"	200	97	102	77.8	42.9	49	16	61.2	37	56.0 x 3.55	M12 x 55
SCO-73.0	SCOC-73.0	2 1/2"	160	109	114	88.9	50.8	61	19	73.9	42	69.0 x 3.55	M12 x 60
SCO-88.9	SCOC-88.9	3"	100	131	135	106.4	61.9	75	19	89.9	51	85.0 x 3.55	M16 x 75
SCO-101.6	SCOC-101.6	3 1/2"	25	140	152	120.7	69.9	86	19	102.7	36	97.5 x 3.55	M16 x 60
SCO-114.3	SCOC-114.3	4"	25	152	162	130.2	77.8	99	19	115.5	36	112.0 x 3.55	M16 x 60
SCO-141.3	SCOC-141.3	5"	25	181	184	152.4	92.1	127	19	142.8	51	136.0 x 3.55	M16 x 75

# Socket Weld Flanges

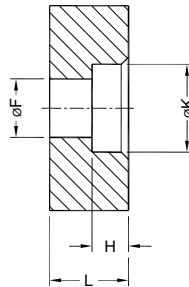
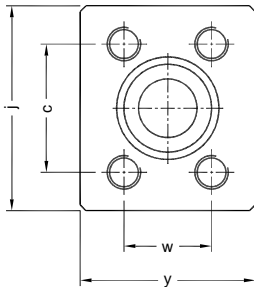
# HCO / HCOC

Dimensions in mm

Mounting Interface conforms to ISO 6162



Flanges  
Model : **HCO**



Counter Flanges  
Model : **HCOC**

## High Pressure Series (Code 62)

Part No. Flanges	Part No. Counter Flanges	Nom Flange Size	Pr (bar)	y	j	c	w	øF	H	ØK	L	O' Ring (Viton) 90 ± 5 Shore	Hex. bolts (10.9)
HCO-21.3	HCOC-21.3	1/2"	400	48	56	40.5	18.2	13	13	21.8	23	19.00 x 3.55	M8 x 35
HCO-26.6	HCOC-26.6	3/4"	400	60	71	50.8	23.8	19	13	27.0	25	25.00 x 3.55	M10 x 40
HCO-33.4	HCOC-33.4	1"	400	70	81	57.2	27.8	25	13	33.7	27	32.50 x 3.55	M12 x 45
HCO-42.2	HCOC-42.2	1.1/4"	400	78	95	66.6	31.8	32	13	42.6	32	37.50 x 3.55	M12 x 50
HCO-48.3	HCOC-48.3	1.1/2"	400	95	113	79.3	36.5	38	13	48.7	36	47.50 x 3.55	M16 x 60
HCO-60.3	HCOC-60.3	2"	400	114	133	96.8	44.5	50	16	61.2	45	56.00 x 3.55	M20 x 75
HCO-73.0	HCOC-73.0	2 1/2"	400	149	175	123.8	58.7	60	16	73.9	52	69.00 x 3.55	M22 x 85
HCO-88.9	HCOC-88.9	3"	400	178	216	152.4	71.4	75	16	89.9	65	85.00 x 3.55	M30 x 110